

**Studio - Residence: NEIGE ET GOLF - Property reference: NEIG-016**

**Description of the property:**

At the foot of the slopes! Beautiful apartment classified 2 \* with very large south-facing terrace facing the slopes!

Total living area: 27m²

Equipments:

Kitchen area: 2 ceramic hobs, refrigerator, microwave, dishwasher, Senseo coffee maker (Capsules not included), filter coffee maker, toaster, kettle, many kitchen accessories, storage, raclette set, fondue set .

Living room: Flat screen TV + 1.8 meter HDMI cable to connect a computer to the television, 3-seater sofa, coffee table, sideboard, dining area with table and chairs for 4 people.

Shower room: Shower cabin with shower screen, cabinet with basin, wall hooks, large mirror, wall mounted electric towel dryer, hair dryer

WC: Independent

Distribution of beds:

Sleeping area separated from the living room by a door: 2 single bunk beds (80x190), window opening onto the terrace.

Living room: 1 double sofa in 160 (new October 2021)

Each bed has a pillow + 1 single duvet + 1 mattress protector (mattress pad)

Floor: 2nd

Orientation: South

Covered terrace of 17m² facing south with superb views of the slopes and garden furniture for 4 people, 1 pull-out sofa for lounging, 1 tarpaulin, 1 broom, 1 (...)

**District:** Pied pistes Montgenèvre

**Single beds :** 2

**Double beds :** 1

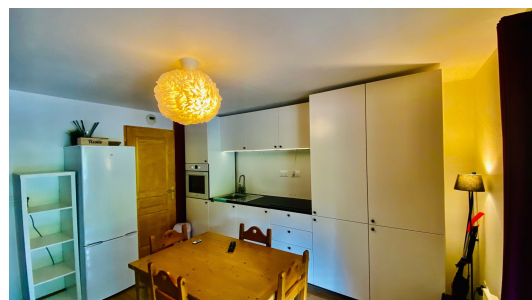
**Capacity:** 4 people

**Floor:** 2

**Rating :** 1 Star

**Surface:** 30 m²

**Lift :** 0



**Description of the residence:**

Distances:

Slopes access: 50 m

ESF & Piou Piou Club: 150 m

Nearest lift: Le Prarial chairlift: 150 m / Chalvet gondola: 150m

Superette: 20 m / Other shops and restaurants: 20 m

Bus station: 50 m

Number of floors: 2 /

Public car parks: P7 paying the winter at 50 m or P4 free at 200 m or P12 at 100m behind the residence

All our apartments are NON-SMOKING

Durancia: Aqualudic Center and Spa Nuxe: 500m (free skibus)

CENTRAL RESERVATION: Reception desk and key rewards: 200m

Geographic location:

